

FLOOR PROTECTOR

The gold standard of trailer flooring options, G-Floor® Universal Flooring is the solution for your trailer flooring needs. Made of 100% polyvinyl, G-Floor® Universal Flooring for OEM's and commercial use offers superior quality, extreme durability, easy installation, and incredible versatility. Reliability, safety and value are at the forefront of our trailer flooring. Manufactured in the USA, G-Floor is great for cargo trailers, toy haulers, concession trailers, luxury horse trailers, travel trailers, pop-up trailers, 5th wheels, utility trailers, restroom trailers and more.

G-Floor® roll-out flooring, made of solid one-piece construction makes it easy to install and trim to fit to accomplish a wall-to-wall, seamless look. Installation is simple, with no need for excessive adhesive, complicated instructions, or additional hassle. Our revolutionary, spun bound backer grabs glue tight for ease of permanent installation saving you time and more money. You get a better product and return on investment because it lasts longer than the competition. G-Floor is manufactured with 100% polyvinyl through and through, unlike traditional thermoplastic olefin (TOP) polymer/filler blends.

G-Floor's durability not only protects your subfloor from damage but won't crack, peel, tear or curl under heavy use. Weatherproof and waterproof, G-Floor's non-porous surface makes cleaning a breeze, simply sweep out or use a damp mop! Extremely slip resistant, it can also withstand scuffs and dirt from shoes and the outdoors. Solid and imaged flooring options are available in an array of colors and expensive-looking patterns and textures helping to amplify and enhance any space. G-Floor's revolutionary advantages will transform the look and feel of your trailer and will last for years to come.



Protect Your Floors While Adding a Touch of Personal Style



9736 Legler Road • Lenexa, KS 66219
 (913) 894-0403
 www.bltlc.com

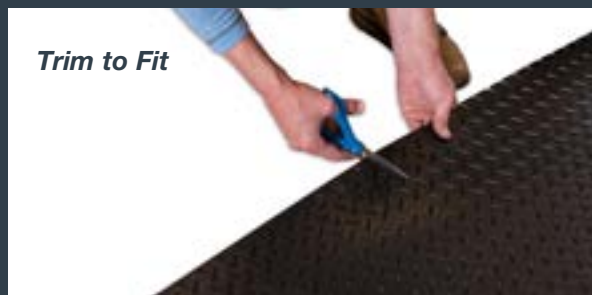


© Better Life Technology | GF0519BC013

TRAILER FLOORING

REVOLUTIONARY

- Easy to install – one piece – no seams
- Waterproof and weatherproof
- Extremely durable – will not crack, peel or tear under heavy use
- Resists slips and staining, flame retardant
- Thick, cushiony spun bound backer grabs glue tight
- Easy clean up; simply sweep or use a damp mop
- Resistant to mud, salt, common chemicals and outdoor debris
- Prevents subfloor deterioration and contamination
- Variety of aesthetically-pleasing designs and custom options
- Manufactured in the USA

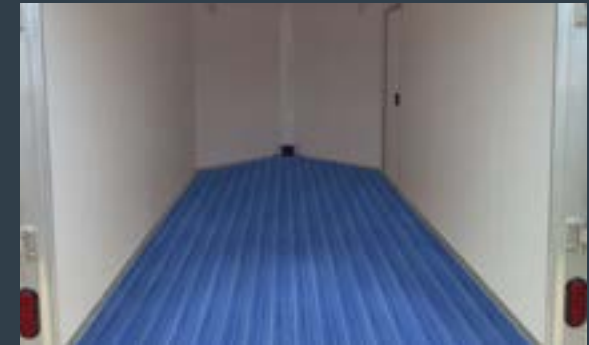




SPUNBOUND BACKER

This spunbound backing gives the flooring an added layer of cushion, minimizes contraction and expansion issues encountered with other flooring products, provides maximum adhesive bond strength and assists with the installation process.

CUSTOM COLORS AVAILABLE



SURFACE TEXTURES

COIN & DIAMOND TREAD

75 mil (approx. 0.075" base thickness)

SMALL COIN

65 mil (approx. 0.065" base thickness)

LEVANT

55 mil (approx. 0.055" base thickness)

DIAMOND TREAD & SMALL COIN

Midnight Black only

55 mil (approx. 0.055" base thickness)

COLORS

Midnight Black

Slate Grey

AVAILABLE SIZES

8'6" x 150'

Available in standard trailer size widths

Cut by the foot options available
(additional fees may apply)

***All products come with
440 spun bound backing**



MIDNIGHT BLACK
SMALL COIN



SLATE GREY
COIN



MIDNIGHT BLACK
LEVANT



SLATE GREY
DIAMOND TREAD